



Enjoy fantastic days in our new house with 4 apartments on a quiet private estate, located in the surroundings of the pictorial and historical wine village of St. Pauls in Sud-Tirol. (420 meters above sea level). In the heart of the castle and vine district, Eppan is on the wine road.

In 10 to 15 minutes walking you can reach the center of St. Pauls, which features 2 grocery stores (supermarkets), one bakery, 2 butcher's shops, a confectionery, hairdresser, various cafes, 6 restaurants, 3 pizzerias and two wine cellars open to the public. We are approx. 10 minutes by car from the county capital Bozen/Bolzano (100,000 inhabitants) and in the proximity of the lakes of Kaltern and the Montiggl. There is public transportation available into the city of Bozen/Bolzano and a free shuttle bus to the Montiggl lakes (in July and August).

Our location is ideal for hiking and biking tours, which can start directly from the house. Also, for excursions to the rest of the region, we are in a good central position. We are open all year around, and for your convenience, the access to the estate gates is by remote control.



View to our house from the nearby castle  
Boymont



### **Luxury Apartments – fully equipped**

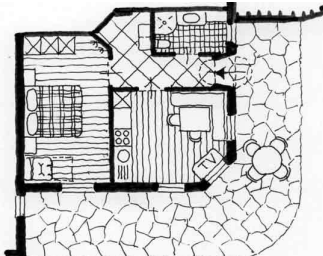
Our non-smoking apartments feature terrestrial and satellite TV, cordless telephone with direct outside line and individual phone numbers to call in directly, radio, free 24h high speed internet connection ADSL, hair drier, safe, iron and ironing board, central heating in each room and additional floor heating in the bathroom; bedrooms with high class style furniture, completely equipped kitchen with tableware, electric induction

heating cooktop (Ceran® glass ceramic) with 4 individual cooking zones, ventilation hood above cooking zone, refrigerator with freezing section, dishwasher (in the apartments “Hocheppan” and “Maultasch”), microwave (apartment “Hocheppan”), coffee machine, Espresso machine, electric kettle, hand blender (mixer), and toaster. Bed linen and towels as well as kitchen cloths are also included.

For kids we can provide small beds (travel bed) and children’s high chair.



#### Description of our apartments

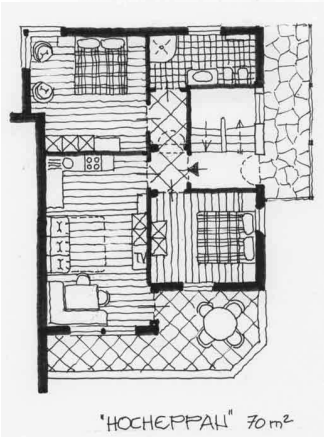


“GREIFENSTEIN” 37 m<sup>2</sup>

#### **Apartment Greifenstein (37 sqm/398 sq. ft.)**

Located on the ground level with separate access door, hall, living kitchen with corner table set and couch, bedroom with double bed and a single bed fold-out couch, shower/toilet, closed private garden with its own beach chairs and a large wooden table set under a pergola.

Ideal for 2-3 persons. Since it is located on the ground level it is ideal for adults with kids.

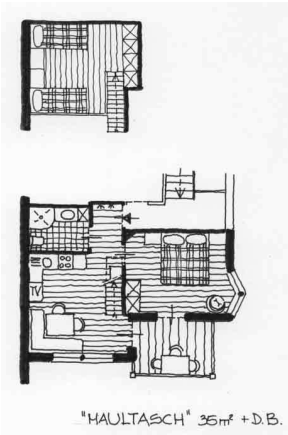


“HOHEPPAN” 70 m<sup>2</sup>

#### **Apartment Hocheppan (70 sqm/753 sq. ft.)**

Located on the first floor with hall, large living kitchen with corner table set and double sleep couch, 2 separate bedrooms with double beds, shower/toilet/bidet, terrace (15 sqm) with a scenic panorama view.

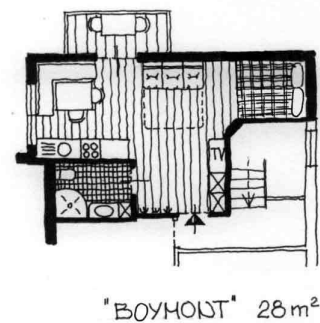
Ideal for 2-4 persons.



**Apartment Maultasch (35 sqm/377 sq. ft. + attic)**

Located on the second floor in the attic with the timber roof in view, complete with living kitchen with corner table set, one bedroom with double bed located on the same floor, and one bedroom with two beds one floor up under in the attic with staircase from the kitchen. Shower/toilet, balcony/terrace with scenic panorama view.

Ideal for 2-4 persons (especially adults with kids)



**Apartment Boymont (28 sqm/301 sq. ft.)**

Single room apartment located in the attic with the beautiful timber roof in view, living/kitchen area with corner table set, french style bed (140 x 200 cm) and double couch (individually extendable as bed), shower/toilet, balcony on the southwest side.

Ideal for 2 persons.



Our house is on a large private property (10,000 m<sup>2</sup>/ 2.5 acres) surrounded by our own orchards and vineyard. We also feature a large car parking lot, patio and garden with several beach chairs, hammock, hot tube spa /Jacuzzi for 6 adults, spacious garden house, barbeque, pergola with large table set in a quiet and scenic view point to relax, children's playground (2 swings, small garden house for children with hanging horse, slide, sandbox with toys), kids tractors & bikes, Hollywood swing, table tennis and table soccer. If requested we are pleased to have daily fresh bread delivered to your apartment from the local bakery (bakery is closed on Sundays and holidays). In addition we have a central fridge with different beverages for you. If you wish to go on a mountain bike tour, we supply 2 new mountain bikes at no charge.

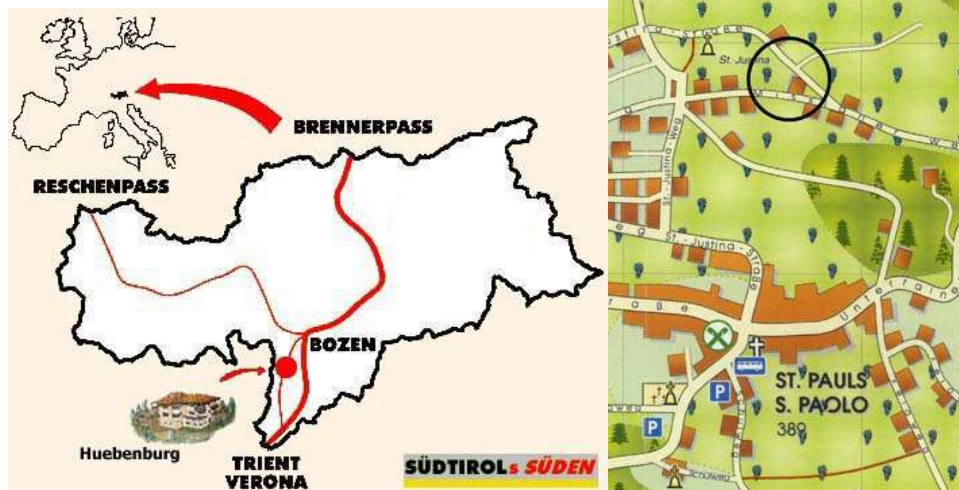
**One day guided bus tours to Venice, Verona, Lake Garda, Dolomite Mountains, etc.**

Explore the culture and nature of our surrounding area with comfortable, modern touring buses. Experienced travel guides lines show you in a pleasant way the variety of the Dolomites, Venice, Verona...



Day	Destination	Details
Tuesday	Venice 	Departure: 6:00 am Return: 19:30 pm  Includes roundtrip by bus, ship trip and guided tour in Venice
Tuesday	Lake Garda (near Verona) 	Departure: 8:10 am Return: 18:00 pm  Includes roundtrip by bus and ship trip from Riva to Malcesine
Wednesday	Great Dolomite Tour 	Departure: 8:15 am Return: 18:00 pm  Includes bus tour Eggental-Karersee-Pordojo –Drei Zinnen
Wednesday	Seiser Alm  The Seiser Alm is the highest mountain plateau in Europe at an altitude of 1,800 – 2,200 metres and 52 km <sup>2</sup> of Alpine meadows.	Departure: 8:40 am Return: 18:00 pm  Includes bus tour and trip with cable car
Thursday	Venice 	Departure: 6:00 am Return: 19:30 pm  Includes roundtrip by bus, ship trip and guided tour in Venice
Friday	Verona – Lake Garda 	Departure: 7:20 am Return: 19:30 pm  Includes roundtrip by bus and guided tour in Verona
Friday	Trento and Rovereto 	Departure: 9:00 am Return: 17:00 pm  Includes roundtrip by bus and guided tour in Trento
Friday	Meran 	Departure: 9:00 am Return: 17:00 pm  Includes roundtrip by bus and guided tour in Trento

## Directions to Huebenburg Apartments



The following are the options to come to our house:

### From the North (Innsbruck/Austria, Munich/Germany)



Verkehrsinfo / Traffic Information:

<http://www.provinz.bz.it/verkehr/>

**Recommended Airports:** Munich, Innsbruck (closest)

### By car from Munich

1. Take the "Autobahn" (freeway/motorway) in the direction to Salzburg/Innsbruck.
2. At the Inntal Dreieck (freeway crossing) take the direction for Innsbruck/Brenner.
3. At Innsbruck take the A13 in the direction to Bozen/Brenner, cross the border at the Brenner pass (no checking) and stay on the Autobahn, which changes the number to A22.
4. Continue for approx. 80 km and exit at Bozen Süd/Bolzano Sud.
5. After the toll gate take the road for Meran/Weinstrasse (entrance to road on your left side)
6. Take the first exit "Eppan/Appiano" and follow the directions for Eppan/Kalern/Weinstrasse
7. Stay on this road for approx. 5 km and exit at "St. Pauls / S. Paolo" at your right.
8. Continue until you reach the center of the St. Pauls village.
9. Near the church you will see a fountain and next to it a big sign with various indications. At the bottom you will see the indication for "von Aufschneider – Huebenburg". Follow this signs to reach our house.

### **By car from Innsbruck**

1. At Innsbruck take the A13 with directions to Bozen / Brenner, cross the border at the Brenner pass (no checking) and stay on the Autobahn, which changes the number to A22.
2. Continue for approx. 80 km and exit at Bozen Süd/Bolzano Sud.
3. After the toll gate take the road for Meran/Weinstrasse (entrance to road on your left side)
4. Take the first exit "Eppan/Appiano" and follow the directions for Eppan/Kaltern/Weinstrasse
5. Stay on this road for approx. 5 km and exit at "St. Pauls / S. Paolo" at your right.
6. Continue until you reach the center of the St. Pauls village.
7. Near the church you will see a fountain and next to it a big sign with various indications. At the bottom you will see the indication for "von Aufschneider – Huebenburg". Follow this signs to reach our house.

### **By train from Munich or Innsbruck**

Take the train with directions to Bozen/Bolzano, Verona, Milano, Roma and get off the train at Bozen/Bolzano. We will be pleased to pick you up from the Bozen/Bolzano train station.

To check out the train table use the following website of the German Railroads:

<http://bahn.hafas.de/bin/query.exe/en>, which gives you detailed information in English about the entire European Railroad system.

## **From the South (Verona)**

**Recommended Airports:** Verona (closest), Milano, Venezia

### **By car from Verona**

1. At Verona take the A22 with directions to Brennero (Brenner)
2. Exit at Bozen Süd/Bolzano Sud.
3. After the toll gate take the road for Meran/Weinstrasse (entrance to road on your left side)
4. Take the first exit "Eppan/Appiano" and follow the directions for Eppan/Kaltern/Weinstrasse
5. Stay on this road for approx. 5 km and exit at "St. Pauls / S. Paolo" at your right.
6. Continue until you reach the center of the St. Pauls village.
7. Near the church you will see a fountain and next to it a big sign with various indications. At the bottom you will see the indication for "von Aufschneider – Huebenburg". Follow this signs to reach our house.

### **By train from Verona, Milano or Venezia (Venice)**

From Verona take the train to Bozen/Bolzano and get off the train at Bozen/Bolzano. When leaving from Milano or Venezia you will need to change the train in Verona. We will be pleased to pick you up from the Bozen/Bolzano train station.

To check out the train table use the following website of the German Railroads:

<http://bahn.hafas.de/bin/query.exe/en>, which gives you detailed information in English about the entire European Railroad system.

For additional information and illustrations please visit our home page at: [www.huebenburg.com](http://www.huebenburg.com)



Christa and Norbert von Aufschneider